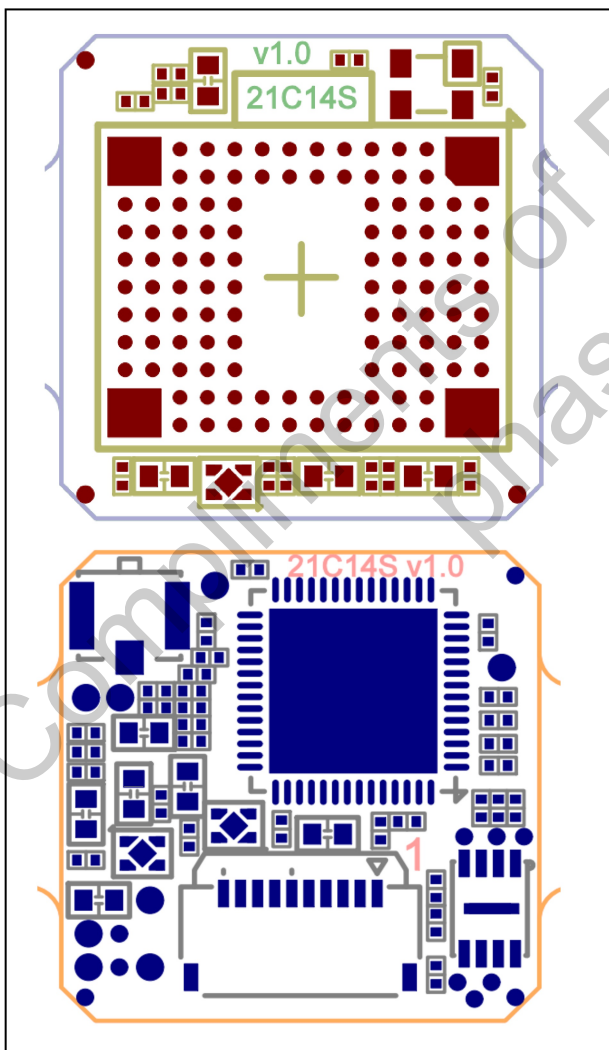


Super small HD-SDI/EX-SDI Full HD color camera (14mm x 14 mm) with True WDR

- * Ultra Low Light Performance(Color image at 0.01Lux)
- * SONY Starvis 2Mega 60fps CMOS Sensor (IMX327)
- * Enhanced WDR performance (Real WDR 30fps)
- * Compressed quality Full HD video with full frame rate(EX-SDI)
- * HD video transmission up to 400M(5C-HFBT) / 200M(3C-2V)
- * Uncompressed high quality Full HD video with full frame rate
- * 1920x1080 25p/30p, 1280x720 60p/50p/30p/25p
- * HD-SDI/EX-SDI Output
- * 2D/3D DNR (Digital Noise Reduction)
- * UART Communication
- * 1,2V and 3,3V power



Parameter	Specification
Sensor Device	Sony 1/2.8 inch 2.1MP Exmor Starvis CMOS Sensor IMX327
Total Pixels	1945(H) x 1109(V) 2.16 Megapixel
Effective Pixels	1945(H) x 1097(V) 2.13 Megapixel
Scanning System	Progressive Scan
Horizontal	More than 1100 TVL
S/N Ratio	More than 52dB
Min. Illumination	0.01Lux (F1.2 @ 30IRE)
Shutter Speed	1/30s Default,(Long Exposure Mode, ~1Sec)
Video Output	1920 x 1080 30p/25P, 1280 x 720 60p/50P/30p/25p (Mode Select)
Video Output Format	SDI Output
Digital Output	EX-SDI or HD-SDI Output(Mode Select)
Day & Night	AUTO
Serial Port	UART 3,3V TTL
Power Source	DC3.3V and DC 1.2V
Operating Current	300 mA
Connectors	u-fl (SDI), 10pin FFC (UART, power)
Operating Temperature	-10°C ~ 50°C
Storage Temperature	-20C ~ 60C
Operating Humidity	(Humidity : 0%RH ~ 90%RH)
Measurement (mm)	14(H) x 14(V) cut off corners for round 19mm
Weight (Approx.)	5 g